



ธนาคารแห่งประเทศไทย
BANK OF THAILAND

Thailand's Key Macroeconomic **CHART PACK**

June 2019

CONTENTS

GDP and Inflation	1
Business Sector	2
SMEs Sector	3
Fiscal Sector	4
Household Sector	5
Labour Market	6
Agricultural Sector	7
Property Sector	8
Service Sector	9
External Sector	10
Money, Credit and Banking	12
Financial Market	14
Payment Statistics	15

Data Finalised 4th June 2019

CONTACT PERSONS

For further information, please contact following coordinators:

Chatchawan Ratanacharoenpornchai	ChatchaR@bot.or.th	Tel. 0 2283 5170
Kiattikhun Samritpiam	KiattikS@bot.or.th	Tel. 0 2356 7410
Pimratchada Srisukteerakul	ManisarS@bot.or.th	Tel. 0 2283 6898

GUIDE

Frequency of data:

A = Annually

Q = Quarterly

M = Monthly

[A]

Chart's Title

Unit of LHS's data

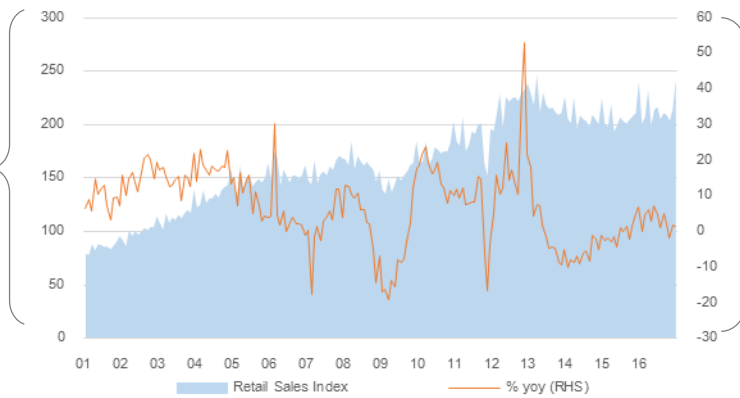
Millions of Baht

% yoy

Unit of RHS's data

Left Hand Side Axis

**Right Hand Side Axis
(RHS)**



Source of data

Source: Bank of Thailand [🔗](#)

Hyperlink

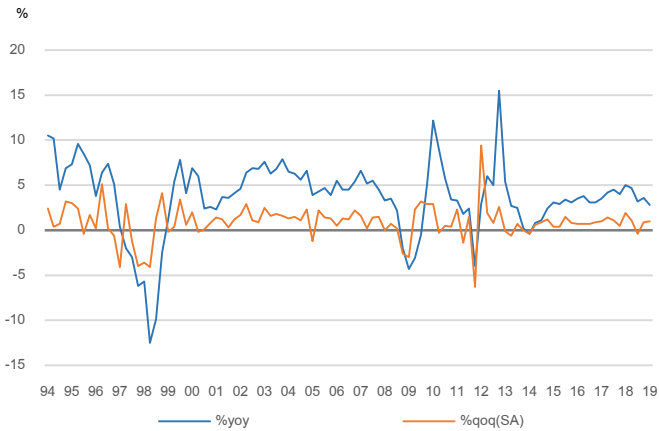
Click to data source

Remark

Remark: if available

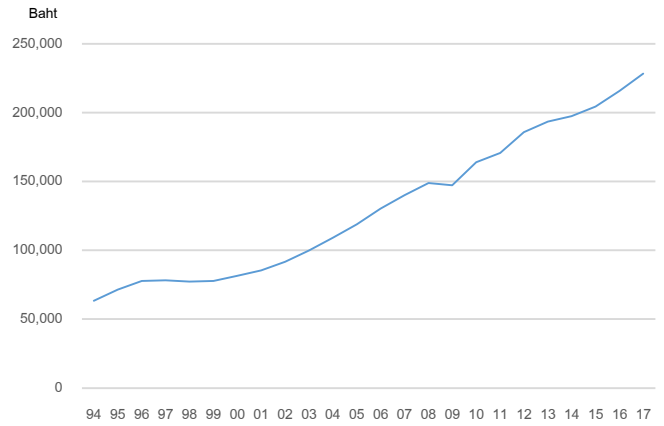
GDP AND INFLATION

Real GDP Growth [Q]



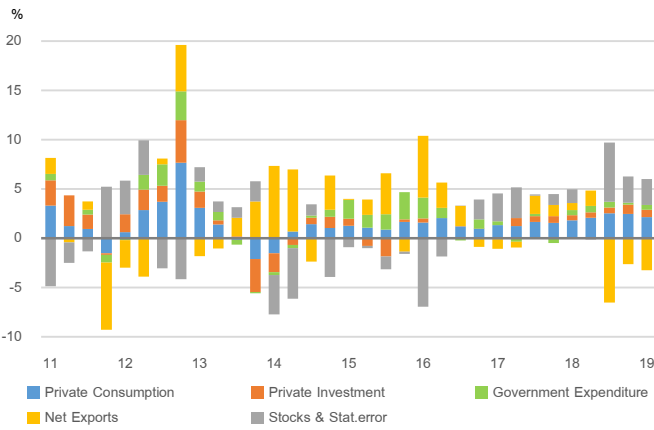
Source: Office of the National Economic and Social Development Board

Per Capita GDP [A]



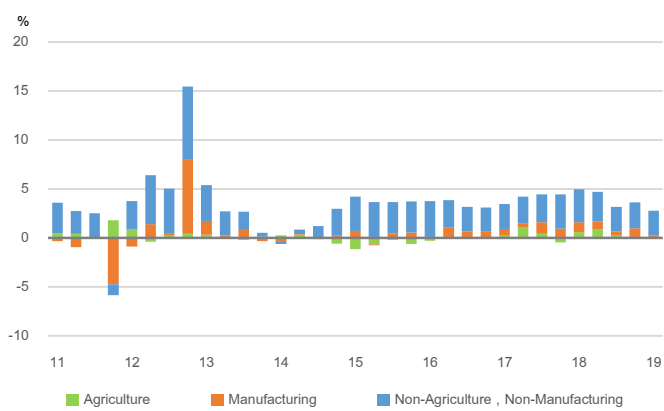
Source: Office of the National Economic and Social Development Board

Contribution to GDP Expenditure [Q]



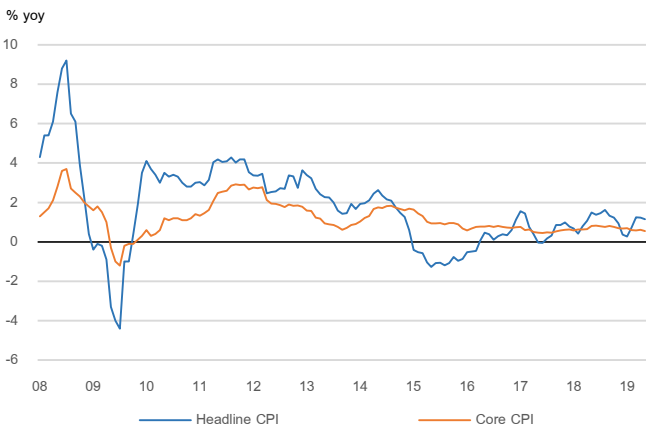
Source: Office of the National Economic and Social Development Board, calculated by Bank of Thailand

Contribution to GDP Production [Q]



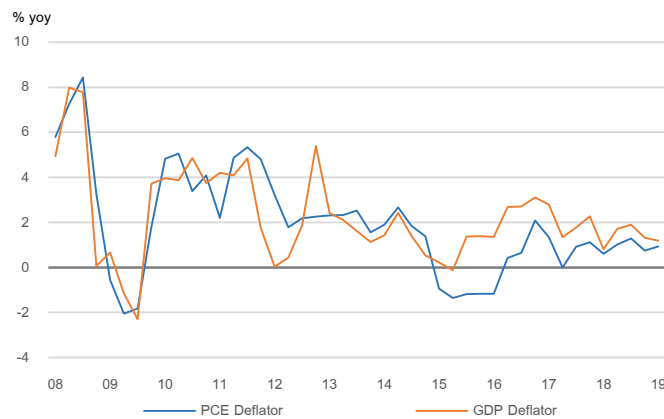
Source: Office of the National Economic and Social Development Board, calculated by Bank of Thailand

Inflation (Consumer Price Index) [M]



Source: Bureau of Trade and Economic Indices, Ministry of Commerce

GDP Deflator & PCE Deflator [Q]

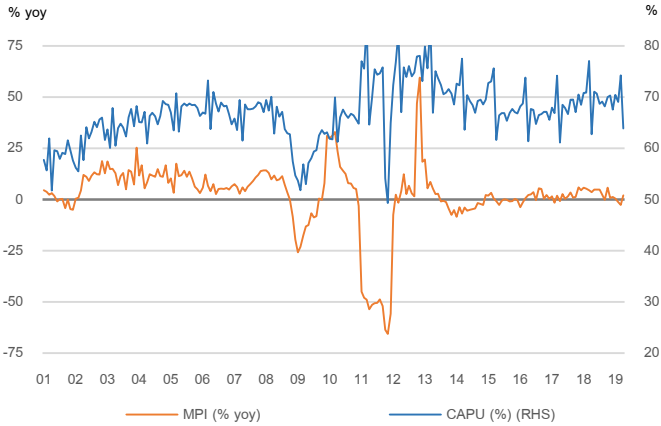


Source: Office of the National Economic and Social Development Board, calculated by Bank of Thailand

Remark: PCE: Private Consumption Expenditure

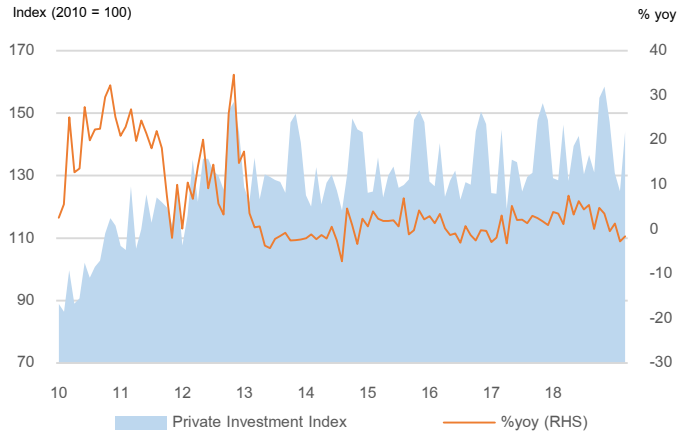
BUSINESS SECTOR

Manufacturing Production Index and Capacity Utilization [M]



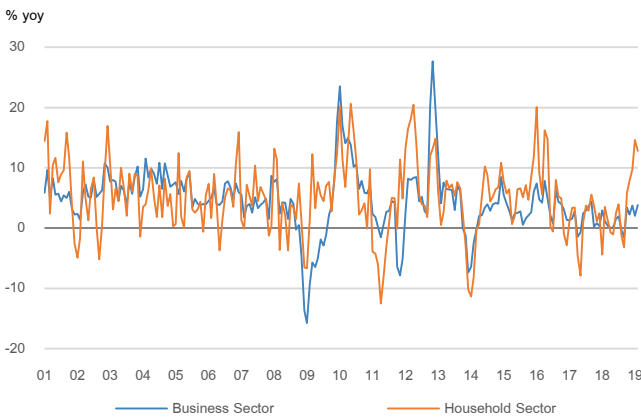
Source: The Office of Industrial Economics [🔗](#)

Private Investment Index [M]



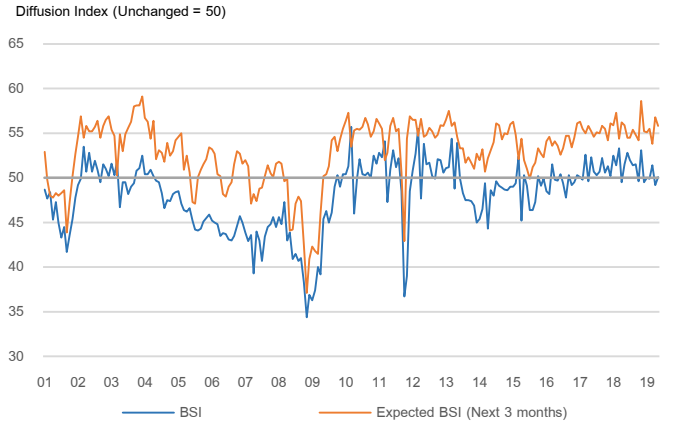
Source: Bank of Thailand [🔗](#)

Electricity Consumption Growth [M]



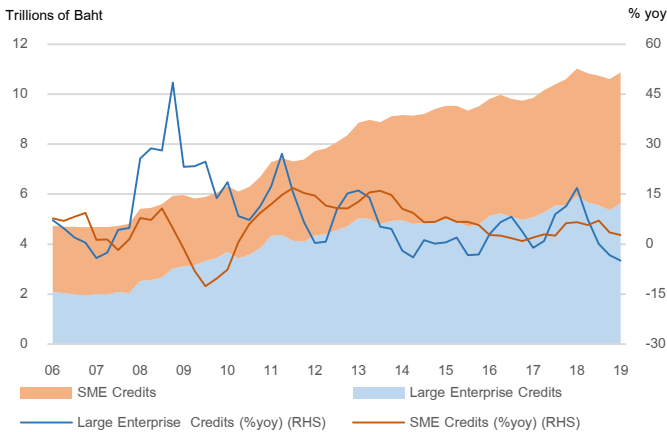
Source: Metropolitan Electricity Authority and Provincial Electricity Authority, compiled by Bank of Thailand

Business Sentiment Index [M]



Source: Bank of Thailand [🔗](#)

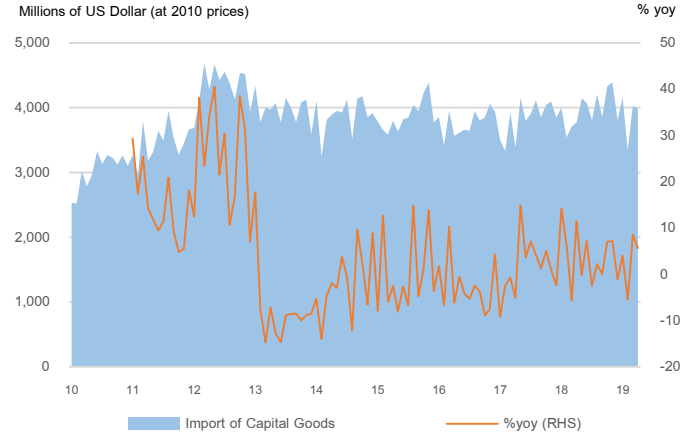
Business Credits by Enterprise Sizes [Q]



Source: Bank of Thailand [🔗](#)

Remark: Business credits from commercial banks only

Import of Capital Goods [M]

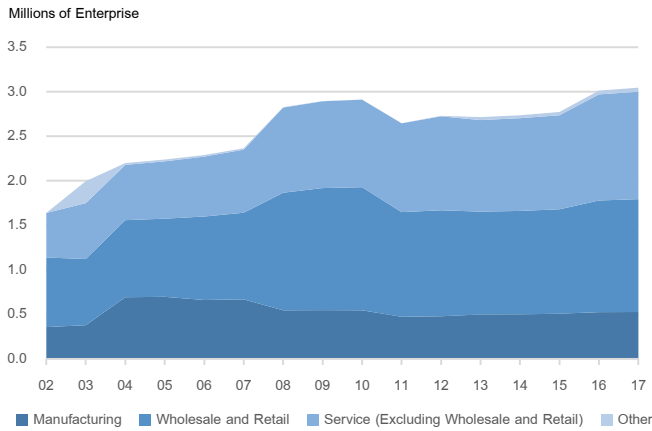


Source: Customs Department, Ministry of Finance [🔗](#)

Remark: Exclude imports of aircrafts, ships, floating structures, and locomotive by government and rent by private sector.

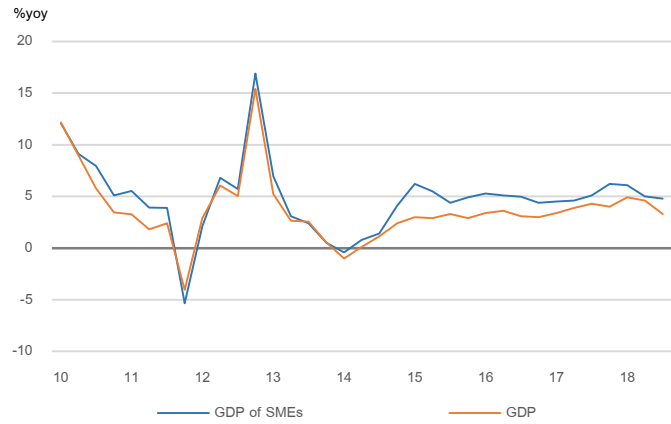
SMEs SECTOR

Number of SMEs [A]



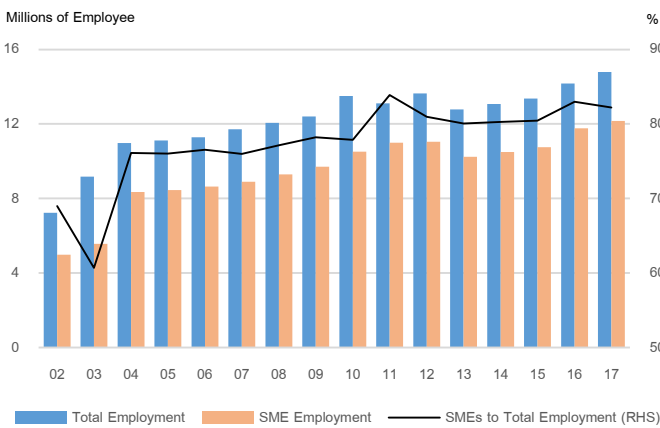
Source: The Office of SMEs Promotion

SMEs' GDP Growth [Q]



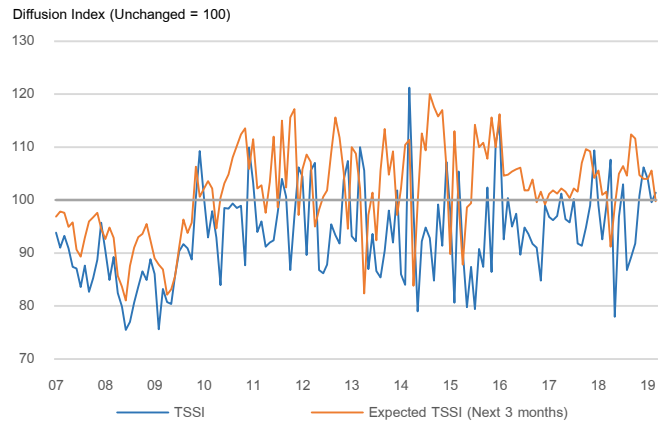
Source: The Office of SMEs Promotion

Employment of SMEs [A]



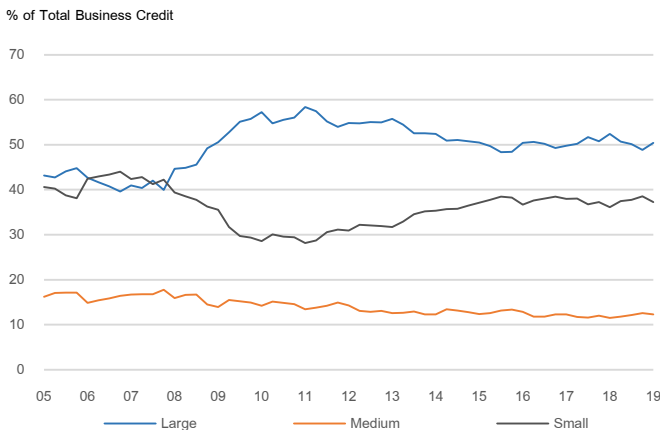
Source: The Office of SMEs Promotion

SMEs' Trade & Service Sentiment Index [M]



Source: The Office of SMEs Promotion

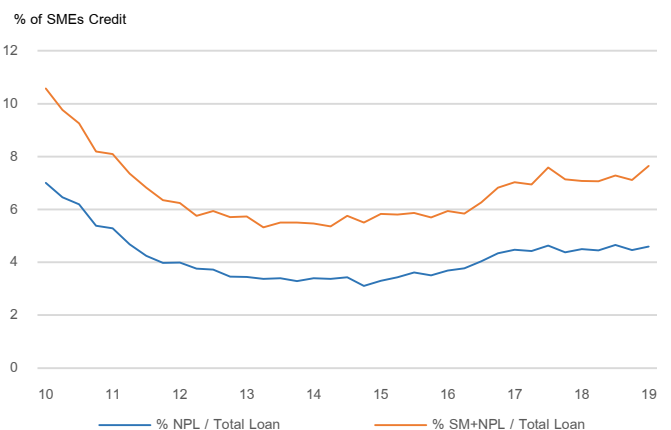
Business Credit by Enterprise Sizes [Q]



Source: Bank of Thailand

Remark: Outstanding business credit of Financial Institution including thai commercial banks, subsidiary, financial companies and credit fonciers

Non-Performing Loan of SMEs Credit [Q]



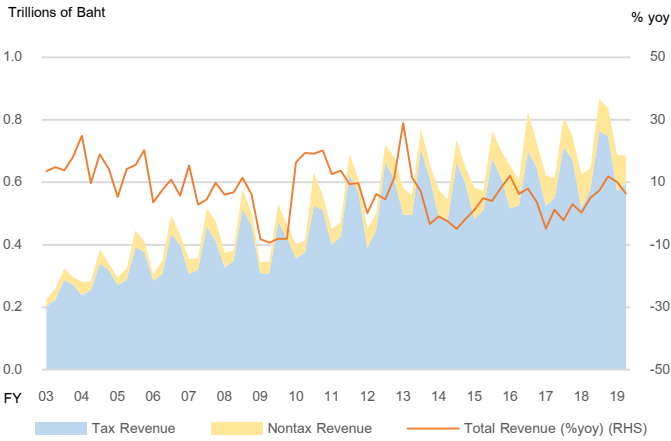
Source: Bank of Thailand

Remark: SM = Special Mention Loan, NPL = Non-Performing Loan
SM + NPL are outstandings of commercial banks only

FISCAL SECTOR

Government Revenue

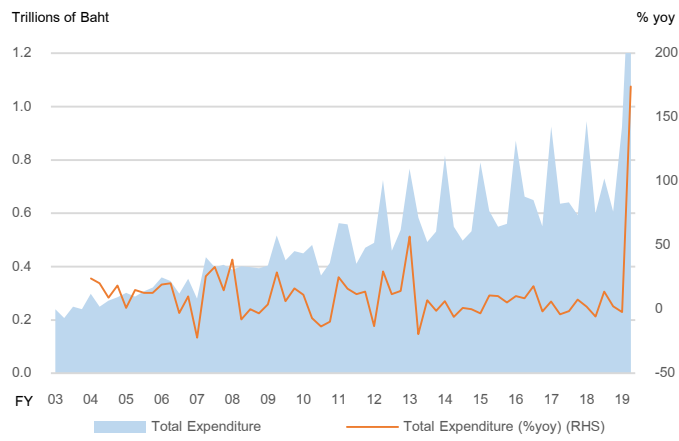
[Q]



Source: Fiscal Policy Office, Ministry of Finance [🔗](#)

Government Expenditure

[Q]

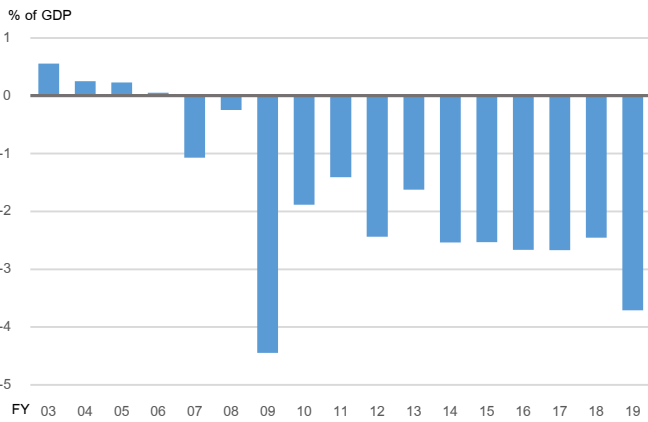


Source: Bank of Thailand [🔗](#)

Remark: Government expenditure includes cash payments for operating activities and purchases of nonfinancial assets

Cash Balance to GDP

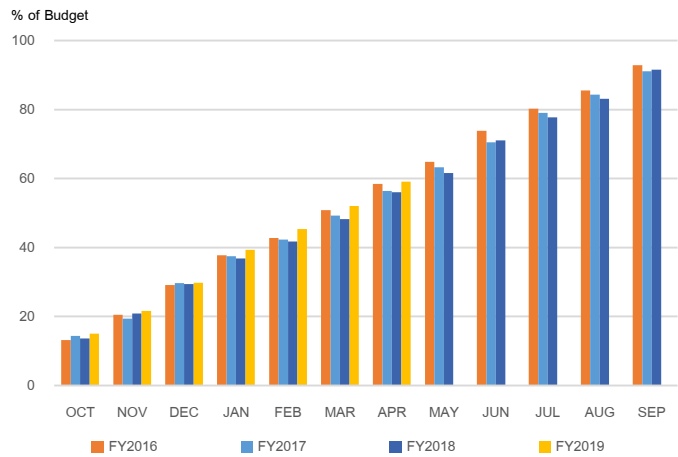
[A]



Source: Bank of Thailand [🔗](#)

Accumulated Disbursement Rate

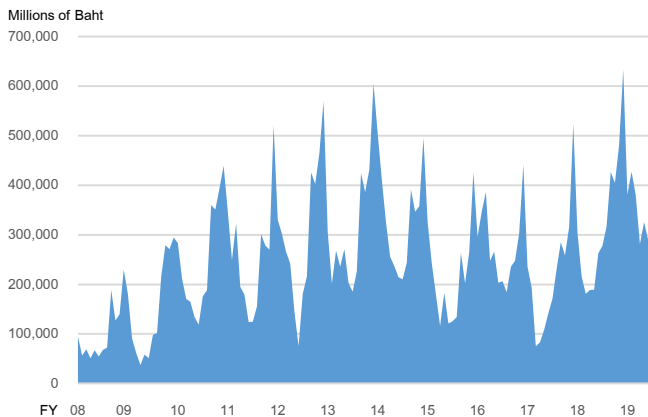
[M]



Source: The Comptroller General's Department

Treasury Cash

[M]



Source: Fiscal Policy Office, Ministry of Finance [🔗](#)

Public Debt to GDP

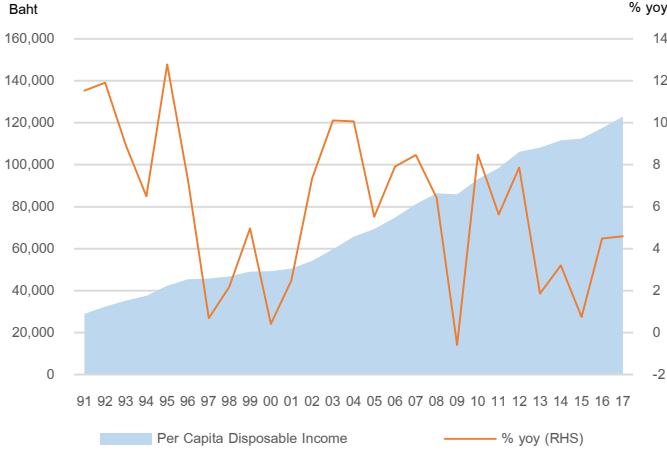
[M]



Source: Public Debt Management Office [🔗](#)

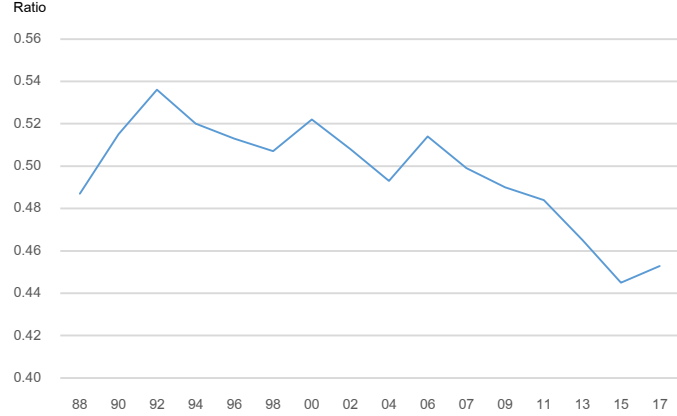
HOUSEHOLD SECTOR

Per Capita Disposable Income [A]



Source: Office of the National Economic and Social Development Board

Gini Coefficient [A]



Source: Office of the National Economic and Social Development Board

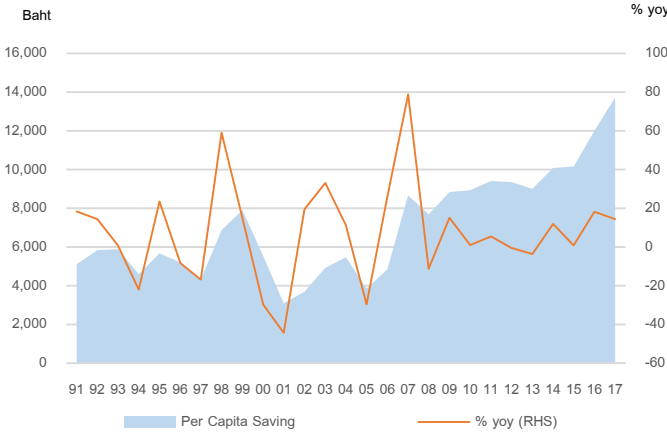
Remark: Gini Coefficient is a measure of income inequality.

A ratio value between 0 and 1.

0 = Perfect Income Equality

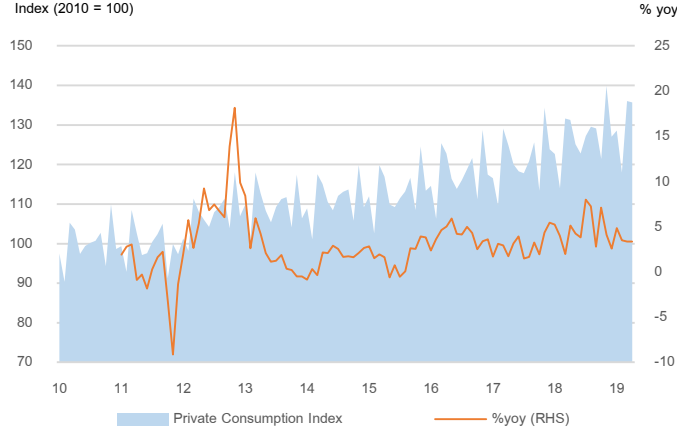
1 = Perfect Income Inequality

Per Capita Saving [A]



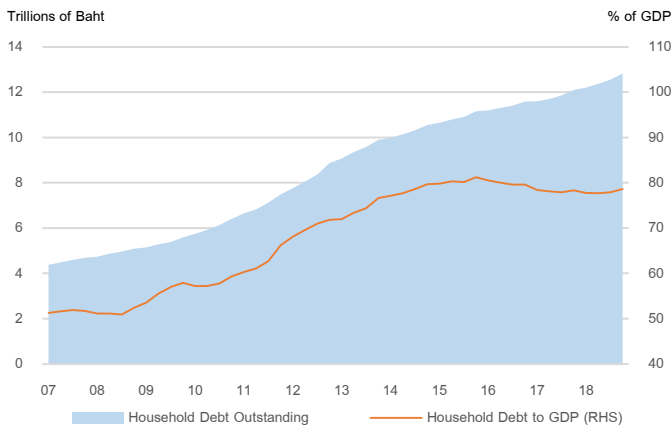
Source: Office of the National Economic and Social Development Board

Private Consumption Index [M]



Source: Bank of Thailand

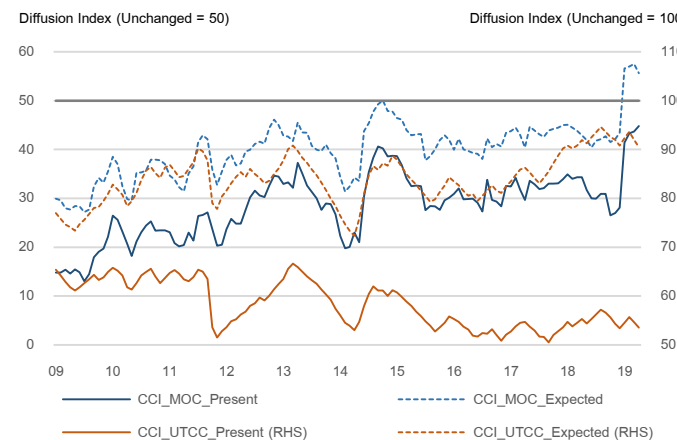
Household Debt [Q]



Source: Bank of Thailand (Household Debt Outstanding) (Household Debt to GDP)

Remark: Household debt consists of overdrafts, general loans, non-negotiable bills and investments in account receivable with financial institutions.

Consumer Confidence Index [M]

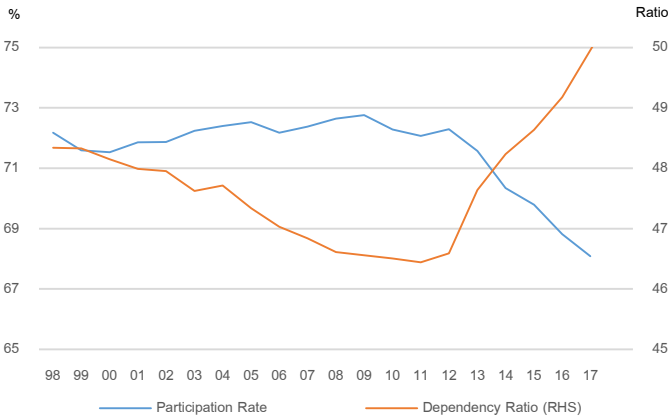


Source: Ministry of Commerce

University of the Thai Chamber Of Commerce

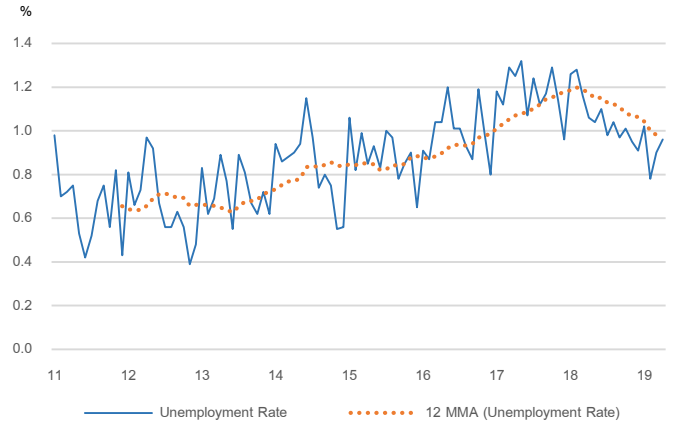
LABOUR MARKET

Participation Rate and Dependency Ratio [A]



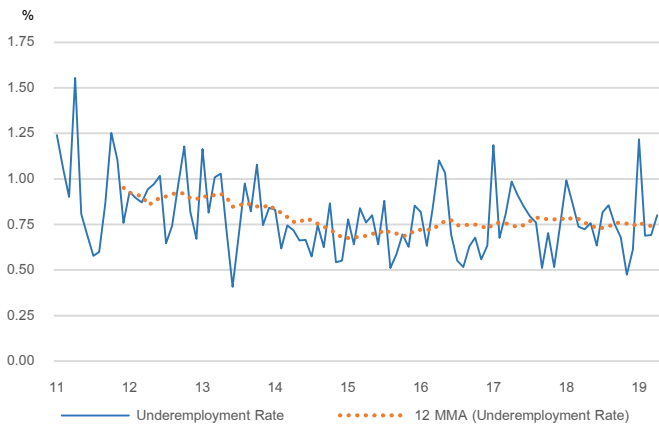
Source: National Statistical Office, calculated by Bank of Thailand

Unemployment Rate [M]



Source: National Statistical Office, calculated by Bank of Thailand

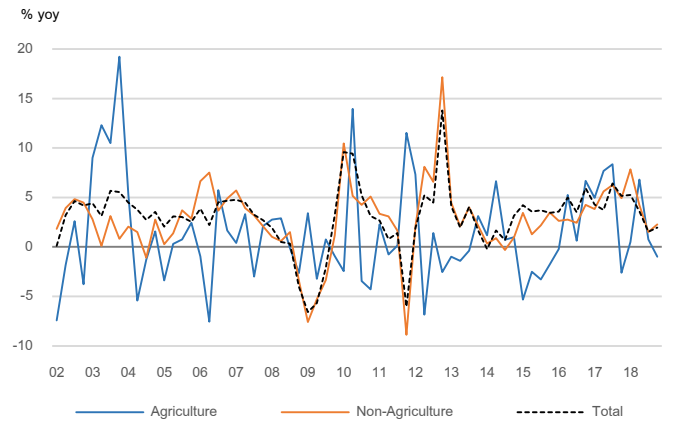
Underemployment Rate [M]



Source: National Statistical Office, calculated by Bank of Thailand

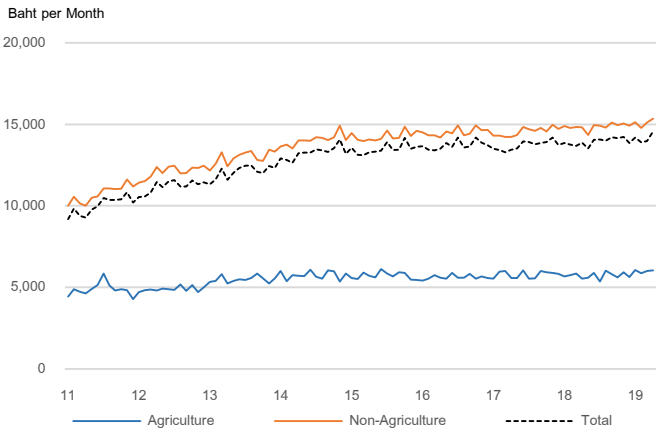
Remark: Work <35 hours/week and available for additional work

Labour Productivity [Q]



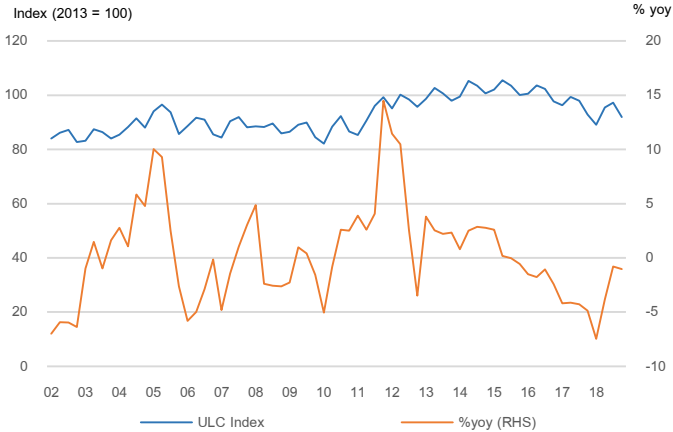
Source: Office of the National Economic and Social Development Board and Bank of Thailand

Average Wage [M]



Source: National Statistical Office, calculated by Bank of Thailand

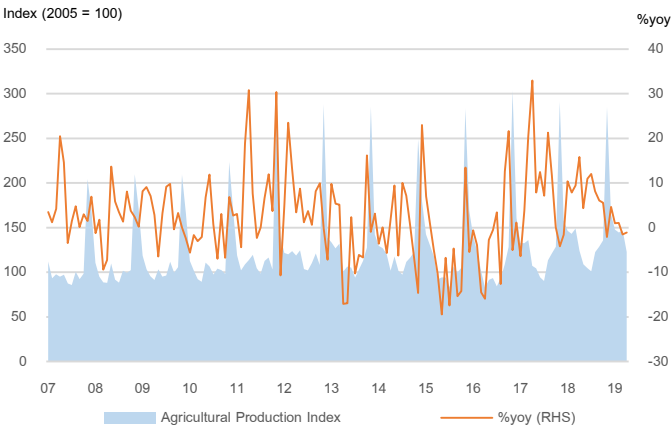
Unit Labour Cost [Q]



Source: Office of the National Economic and Social Development Board and Bank of Thailand

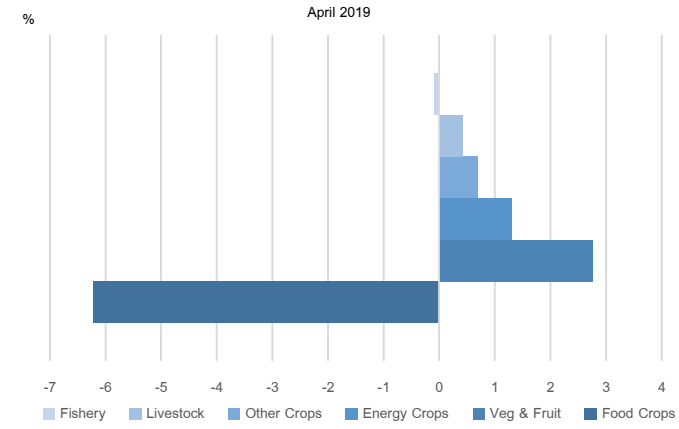
AGRICULTURAL SECTOR

Agricultural Production



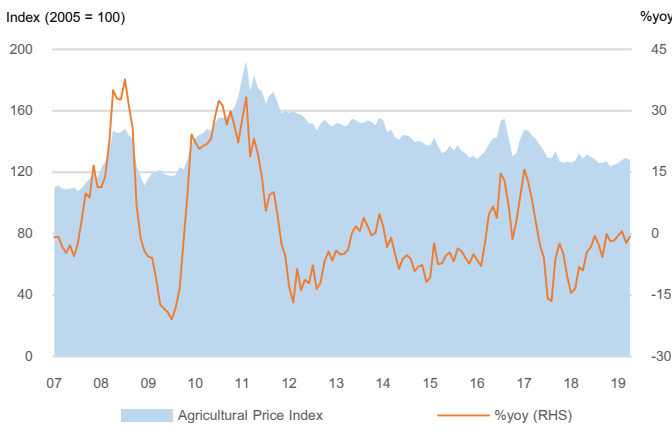
Source: Office of Agricultural Economics

Contribution to Agricultural Production Growth



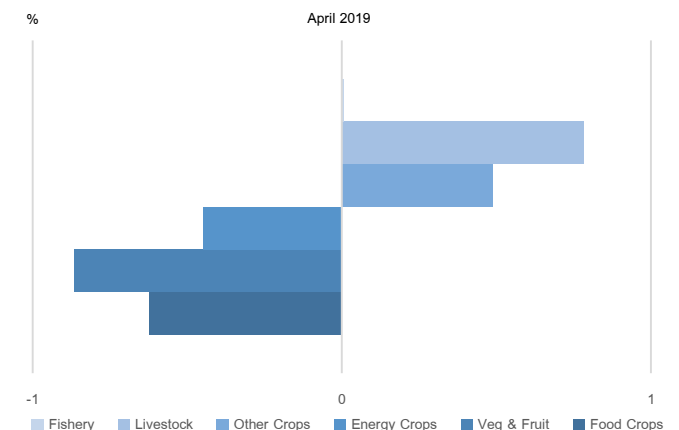
Source: Office of Agricultural Economics, calculated by Bank of Thailand

Agricultural Price



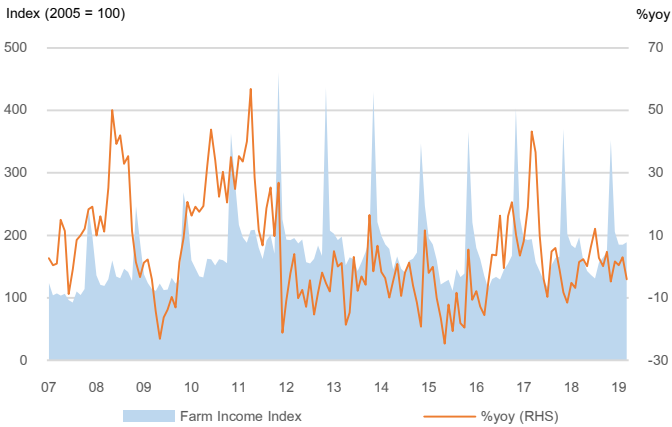
Source: Office of Agricultural Economics

Contribution to Agricultural Price Growth



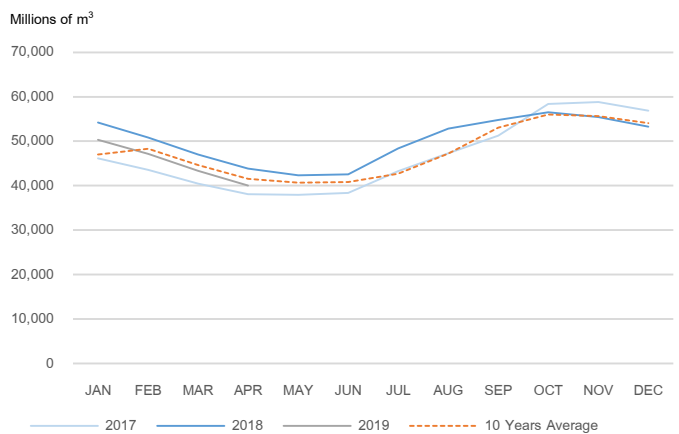
Source: Office of Agricultural Economics, calculated by Bank of Thailand

Farm Income



Source: Office of Agricultural Economics, calculated by Bank of Thailand

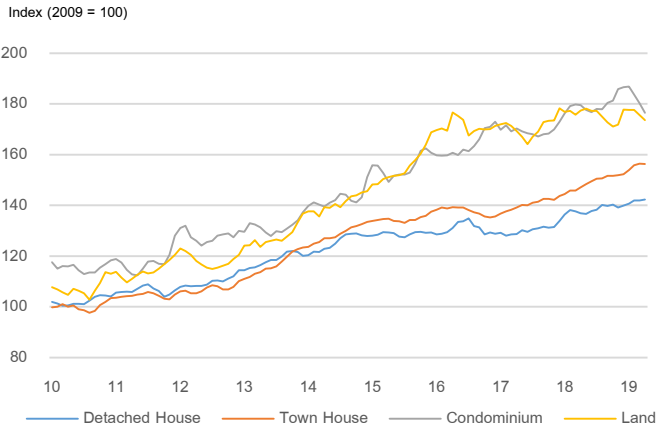
Water Level in Reservoirs



Source: Royal Irrigation Department

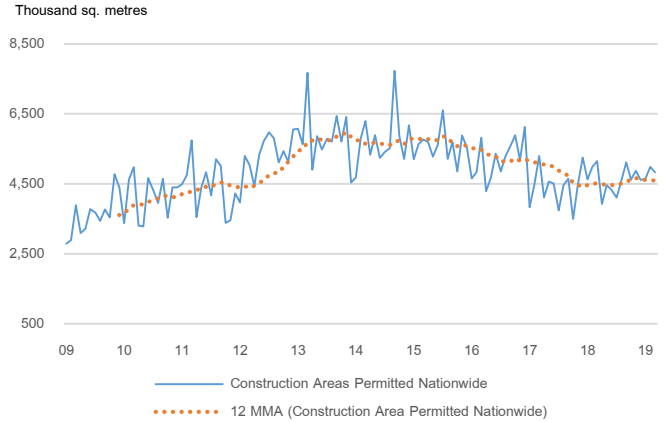
PROPERTY SECTOR

Land and Residential Property Price Indexes [M]



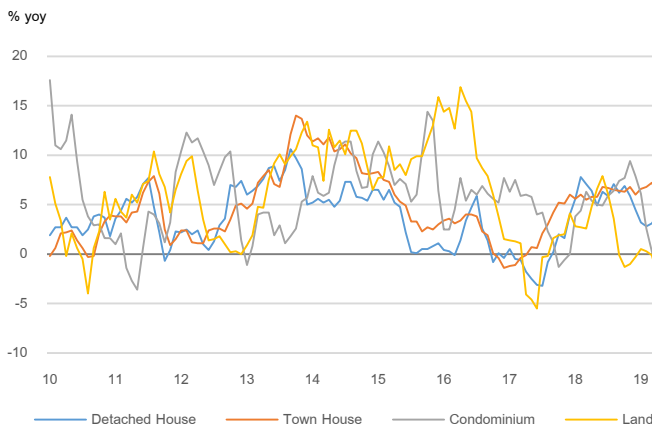
Source: Bank of Thailand

Construction Area Permitted Nationwide [M]



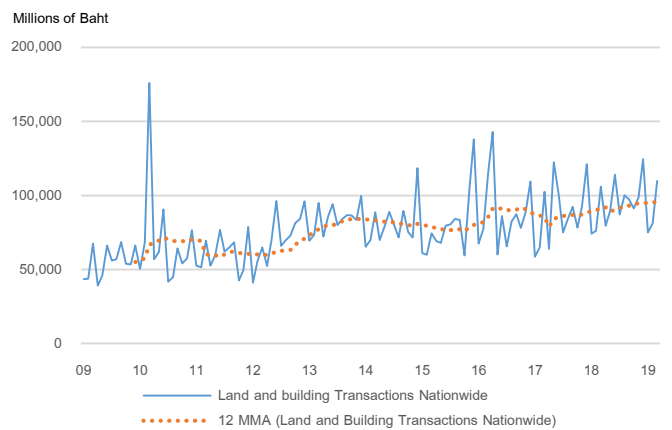
Source: Bangkok Metropolitan Administration, District Offices and Municipality in provinces, compiled by Bank of Thailand

Land and Residential Property Price Growth [M]



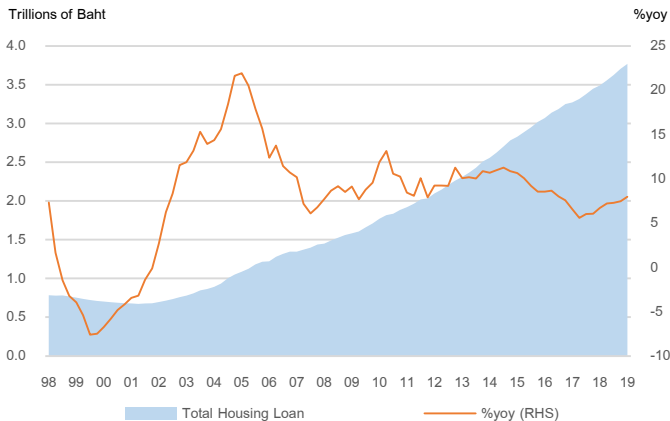
Source: Bank of Thailand

Land and Building Transactions Nationwide [M]



Source: Department of Land, Ministry of Interior, compiled by Bank of Thailand

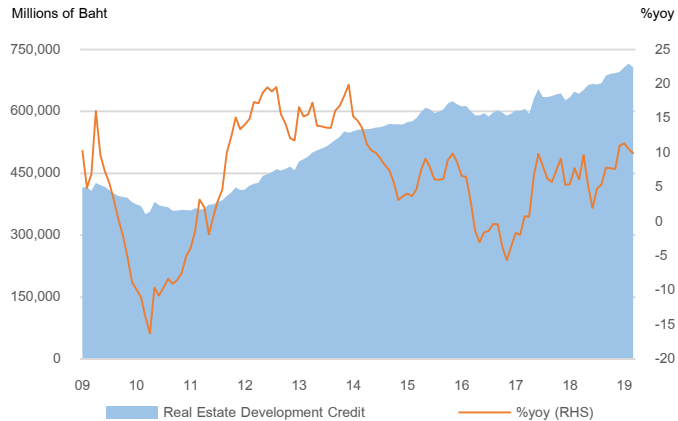
Outstanding of Housing Loans for Personal Consumption [Q]



Source: Bank of Thailand

Remark: Housing loans from financial institutions including commercial banks, depository specialized finance institutions, insurance corporations, and other financial institutions

Real Estate Development Credit Outstanding [M]

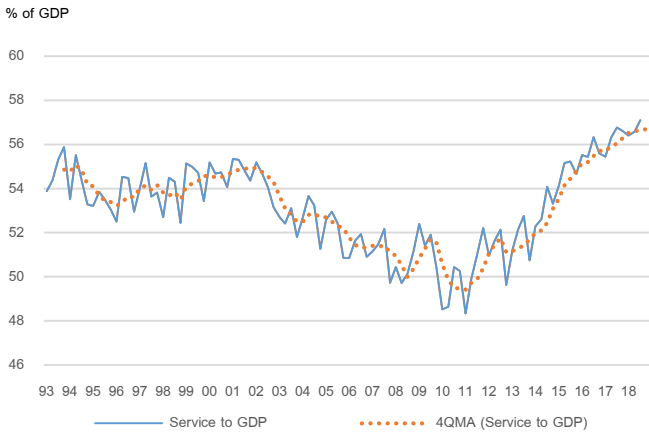


Source: Bank of Thailand

Remark: Real estate development credit from commercial banks only

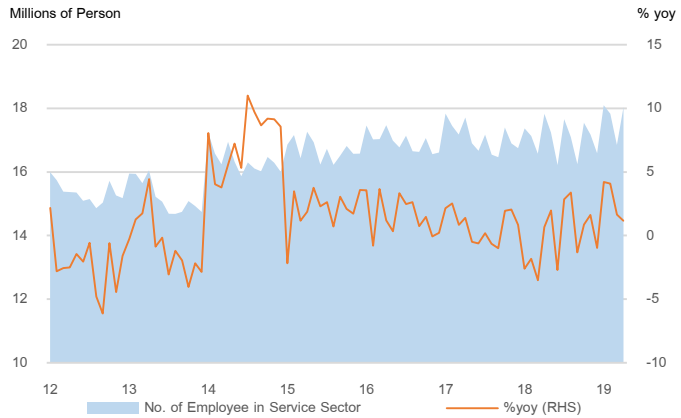
SERVICE SECTOR

Share of Service Sector in GDP [Q]



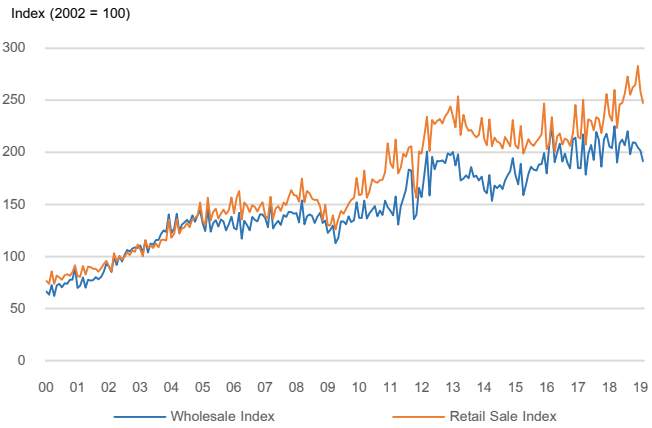
Source: Office of the National Economic and Social Development Board, calculated by Bank of Thailand



Employment in Service Sector [Q]



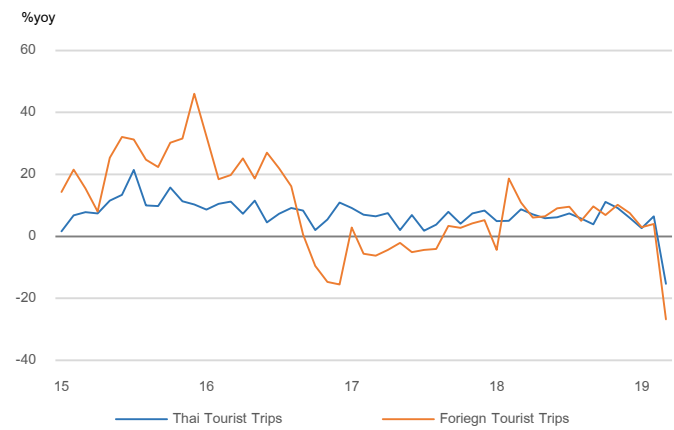
Source: National Statistical Office, Bank of Thailand

Wholesale and Retail Sale Indexes [M]



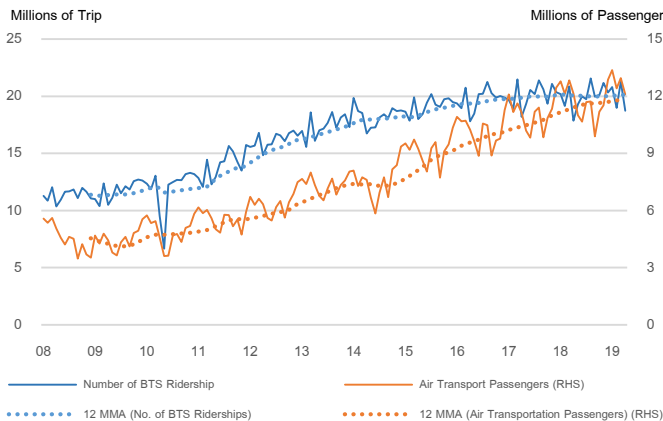
Source: Bank of Thailand (Wholesale Index ) (Retail Sale Index )


Internal Tourism [M]



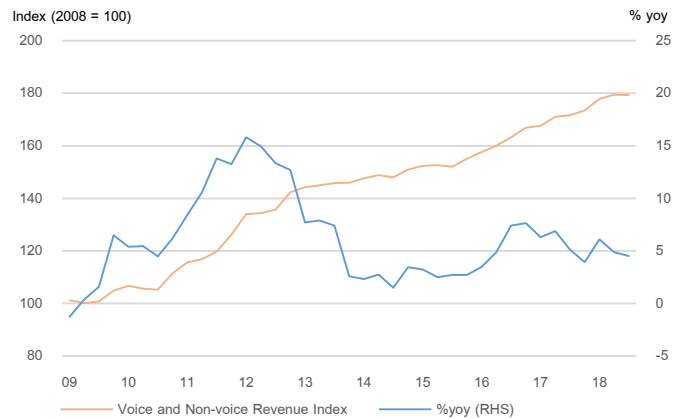
Source: TAT Intelligence Center, Tourism Authority of Thailand

Transportation [M]



Source: BTS GROUP HOLDINGS Public Company Limited  Airport of Thailand Public Company Limited 

Telecommunication [Q]

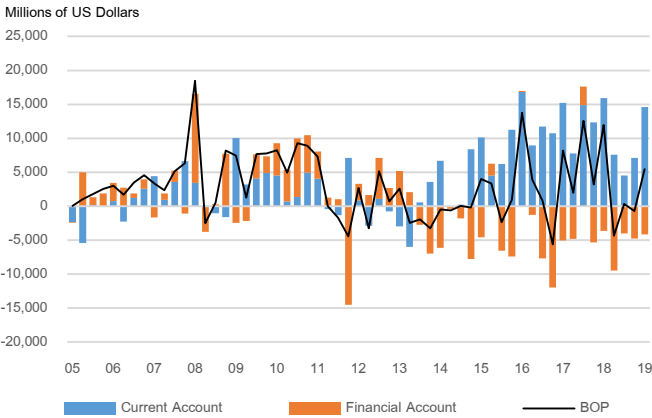


Source: National Broadcasting and Telecommunications Commission, calculated by Bank of Thailand

Remark: Revenue of mobile network service providers

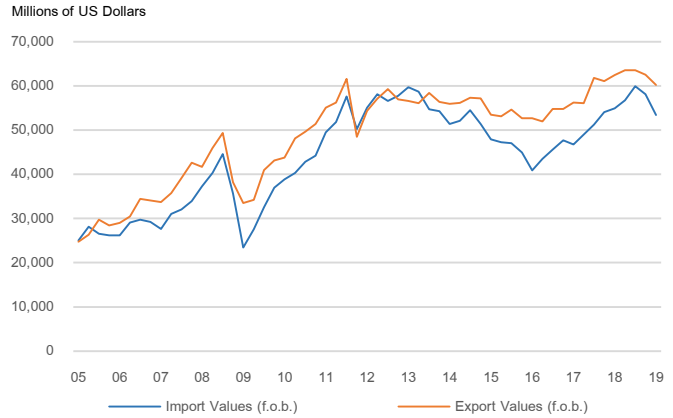
EXTERNAL SECTOR (1)

Balance of Payments [Q]



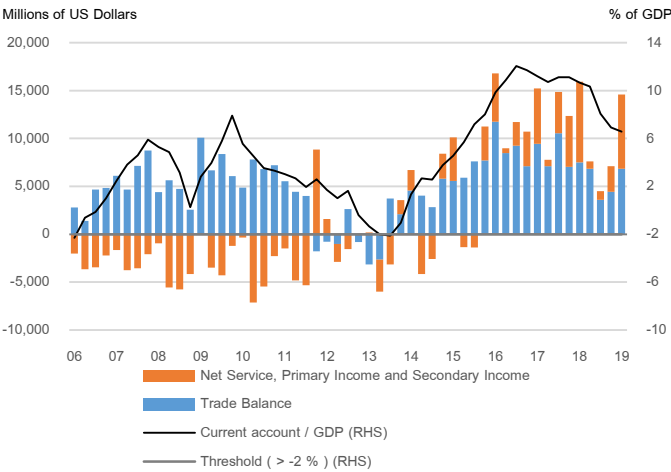
Source: Bank of Thailand

International Trade [Q]



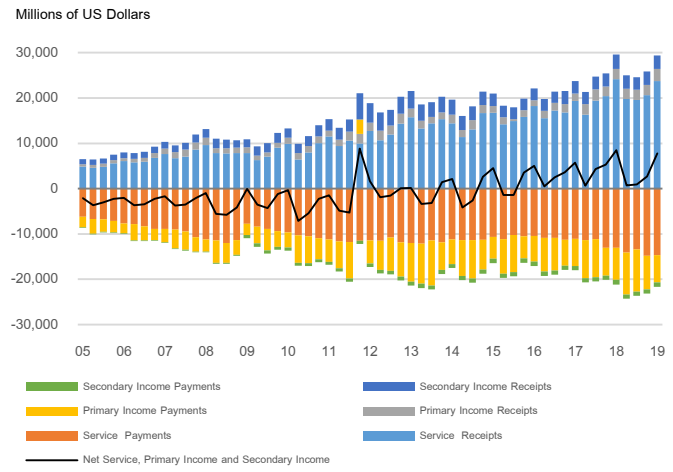
Source: Bank of Thailand

Current Account Components and Current Account to GDP [Q]



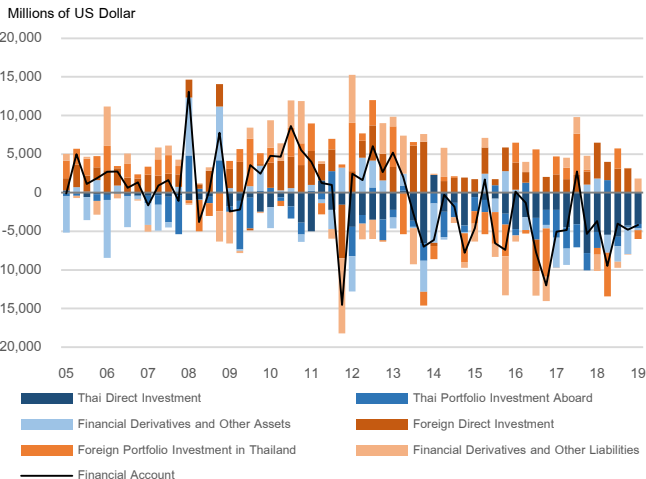
Source: Bank of Thailand

Service, Primary Income and Secondary Income [Q]



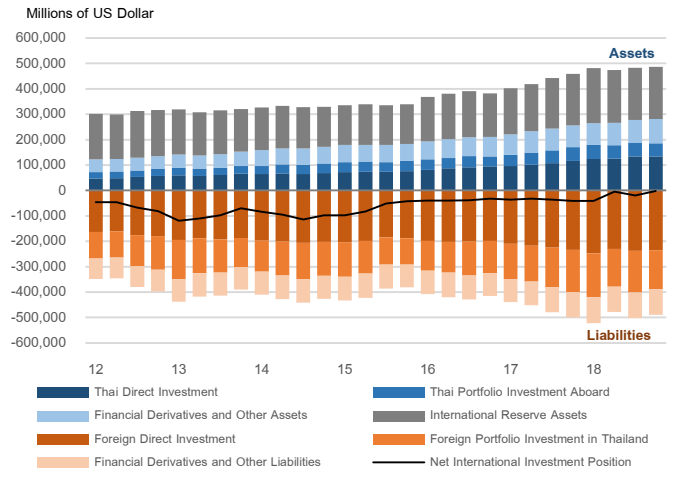
Source: Bank of Thailand

Financial Account [Q]



Source: Bank of Thailand

International Investment Position [Q]

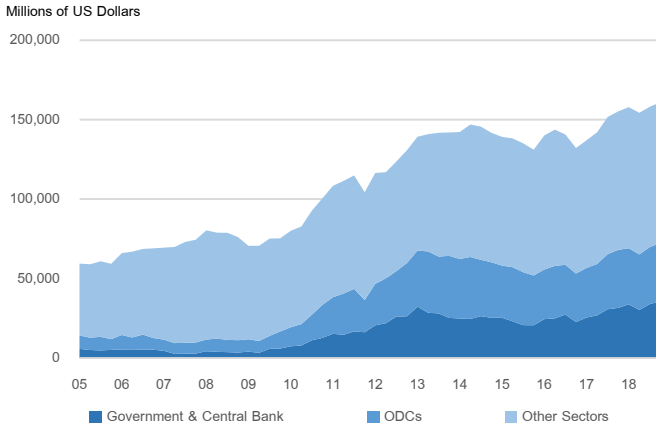


Source: Bank of Thailand

EXTERNAL SECTOR (2)

External Debt by Sector

[Q]

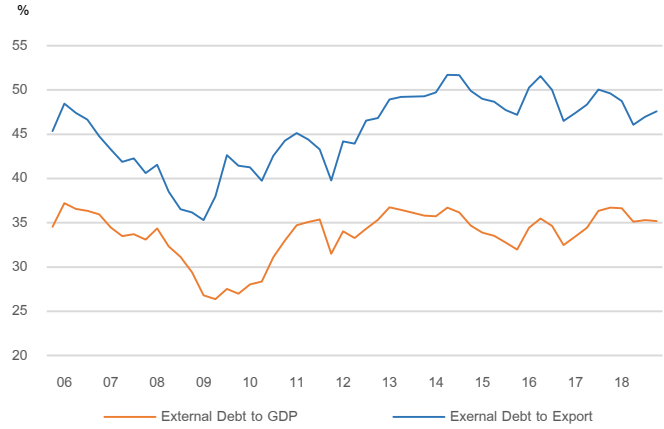


Source: Bank of Thailand

Remark: Other Depository Corporations (ODCs) comprise domestically registered commercial banks, branches of foreign banks, international banking facilities, finance companies and specialized banks.

External Debt to GDP & External Debt to Export

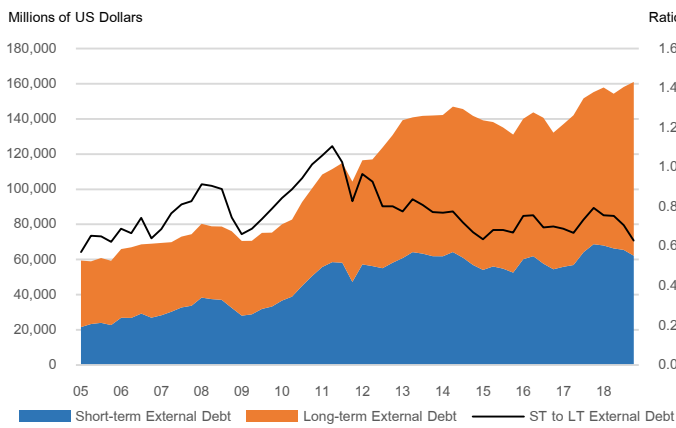
[Q]



Source: Bank of Thailand

Short and Long Term External Debt

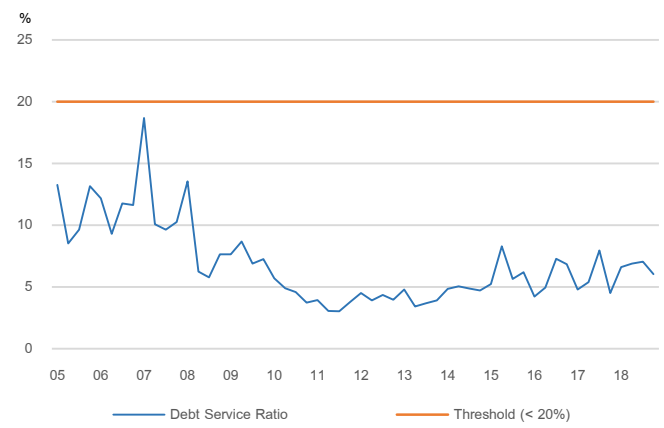
[Q]



Source: Bank of Thailand

Debt Service Ratio on External Debt

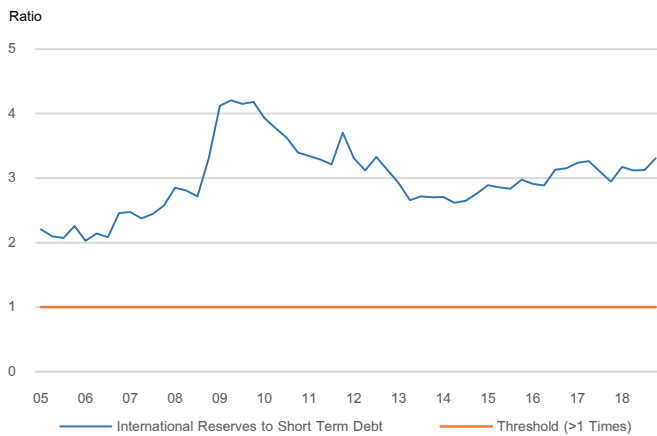
[Q]



Source: Bank of Thailand

International Reserves to Short Term Debt

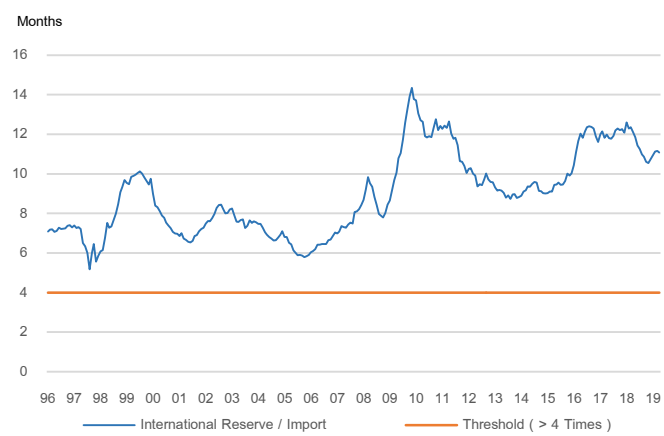
[Q]



Source: Bank of Thailand

International Reserves to Import

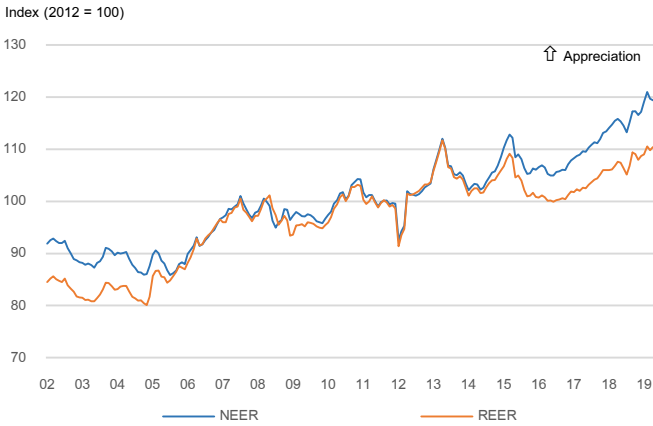
[M]



Source: Bank of Thailand

MONEY, CREDIT AND BANKING (1)

NEER & REER [M]



Source: Bank of Thailand

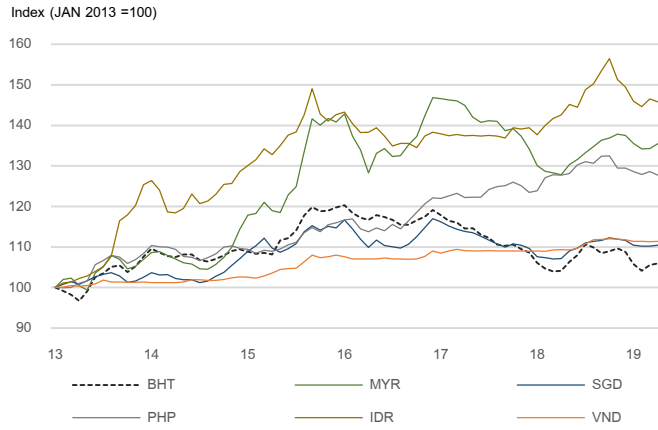
Exchange Rate [M]



Source: Bank of Thailand

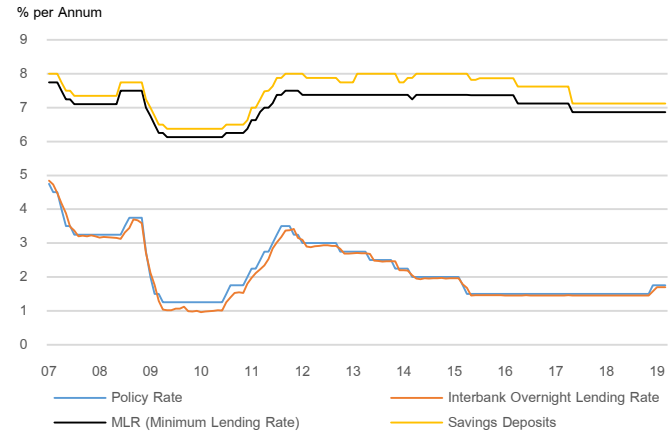
Remark: Reference rate US Dollar (USD)

Selected South East Asia Currencies against the US Dollar [M]



Source: Bank of Thailand

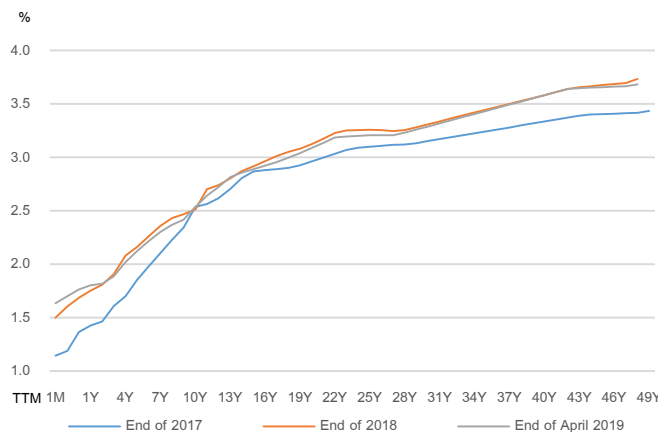
Interest Rate [M]



Source: Bank of Thailand

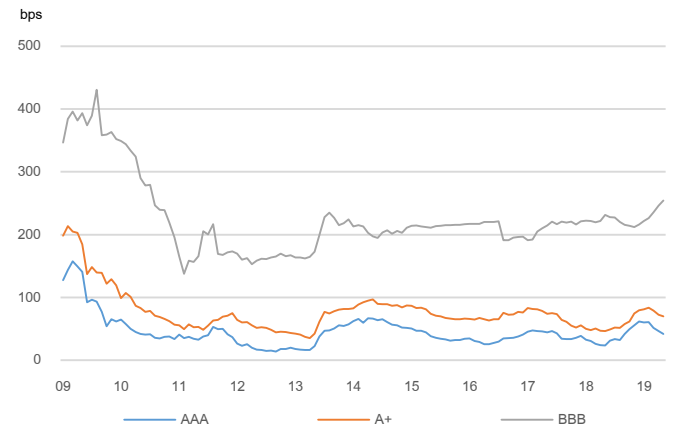
Remark: MLR and saving deposit interest rates are maximum rate.

Government Bond Yield Curve [M]



Source: Thai Bond Market Association

Thai Corporate Bond Spreads [M]

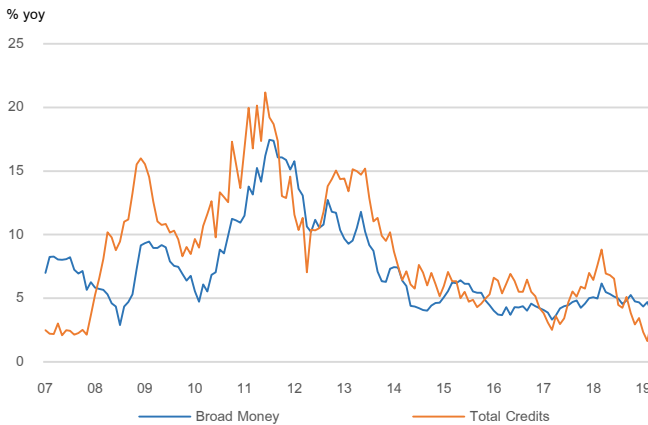


Source: Thai Bond Market Association

Remark: Spread over government bond yields for 3-year remaining maturity corporate bonds

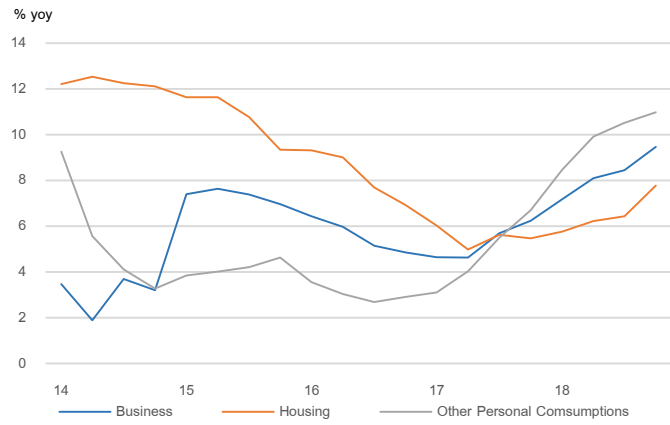
MONEY, CREDIT AND BANKING (2)

Broad Money & Credit Growth



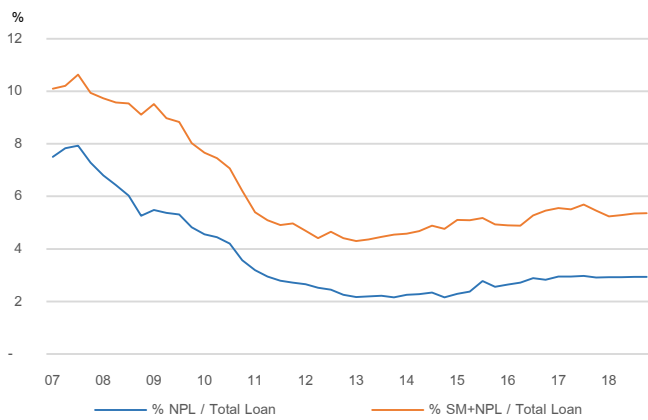
Source: Bank of Thailand (Board Money [🔗](#)) (Total Credits [🔗](#))
Remark: Other depository corporations' credits

[M] Credit Growth by Sector [Q]



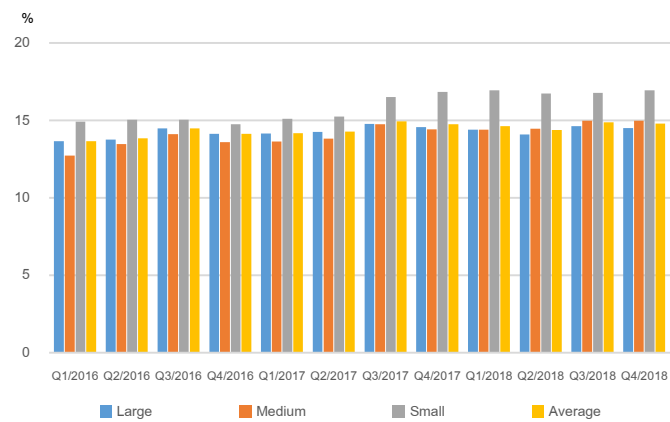
Source: Bank of Thailand [🔗](#)
Remark: Commercial banks' credits only

Non-Performing Loan



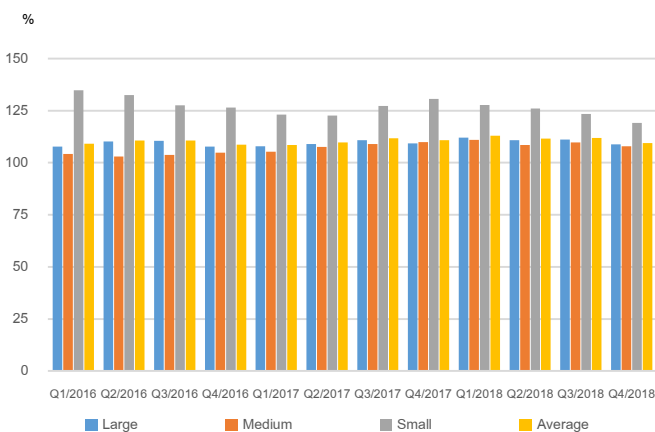
Source: Bank of Thailand [🔗](#)
Remark: SM = Special Mention Loan, NPL = Non-Performing Loan
 SM + NPL are outstandings of commercial banks only

[Q] Tier 1 Capital to Risk Assets by Thai Commercial Bank Sizes [Q]



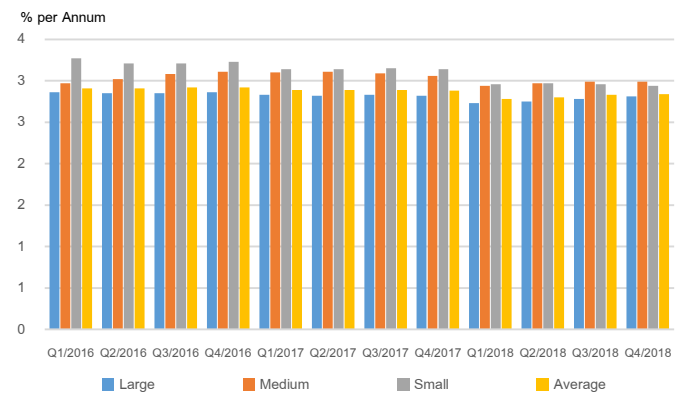
Source: Bank of Thailand [🔗](#)
Remark: BOT Threshold of Tier 1 Capital to Risk Assets for Thai Commercial Banks is 6.625% as of 1st January 2016 and 7.25% as of 1st January 2017

Loans to Deposits by Thai Commercial Bank Sizes [Q]



Source: Bank of Thailand [🔗](#)

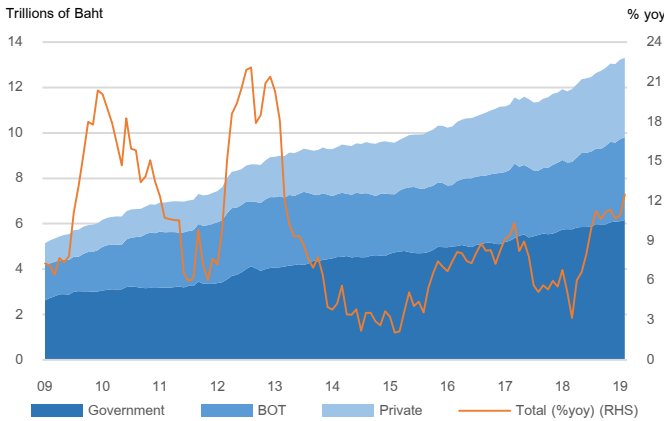
Net interest income/Average interest earning assets (Per year) (NIM) by Thai Commercial Bank Sizes [Q]



Source: Bank of Thailand [🔗](#)

FINANCIAL MARKET

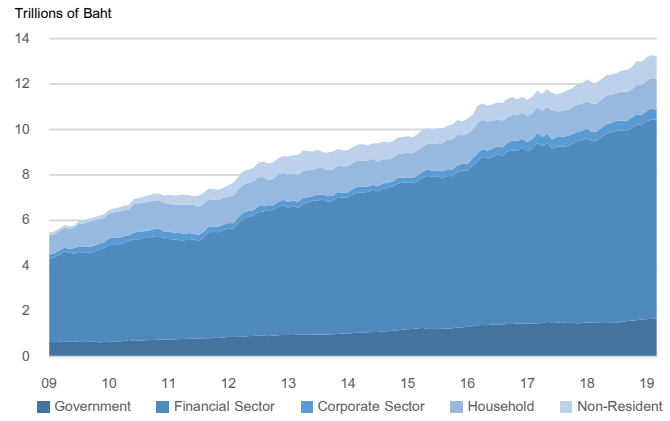
Outstanding of Debt Securities in Thailand by Issuer [M]



Source: Thai Bond Market Association, Securities and Exchange Commission, and Bank of Thailand

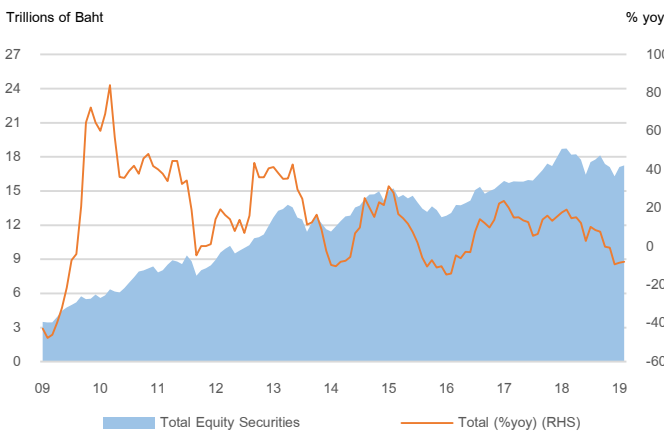
Remark: Private Issuer refers to corporates and non-residents

Outstanding of Debt Securities in Thailand by Holder [M]



Source: Thai Bond Market Association, Securities and Exchange Commission, and Bank of Thailand

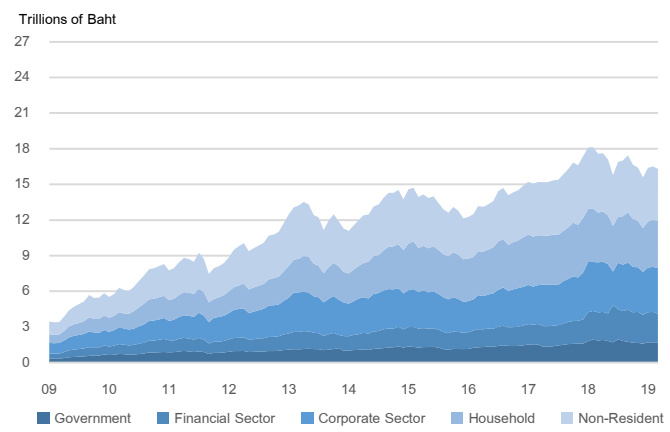
Outstanding of Equity Securities [M]



Source: Stock Exchange of Thailand, compiled by Bank of Thailand

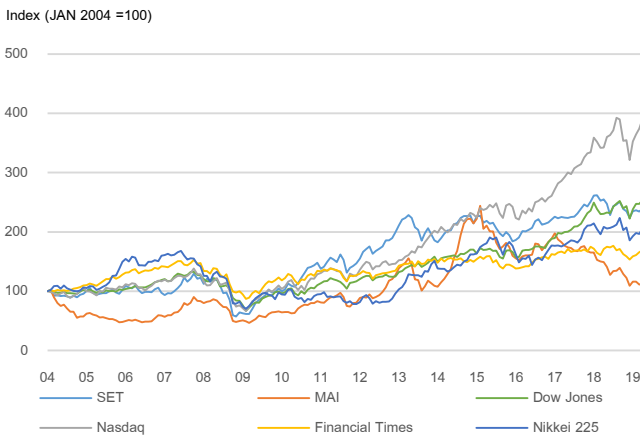
Remark: Equity Securities include common stocks and preferred stocks in SET and MAI.

Outstanding of Equity Securities by Holder [M]



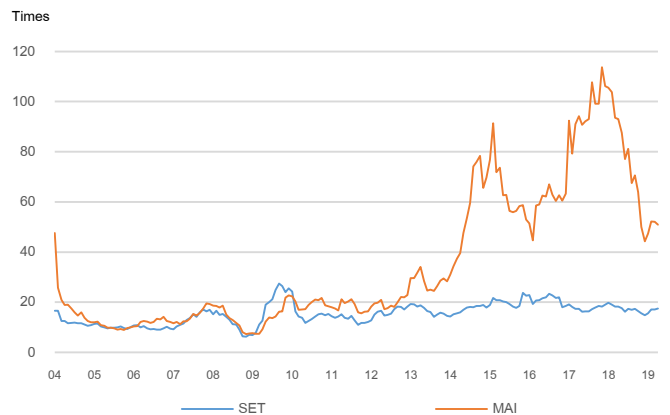
Source: Stock Exchange of Thailand, compiled by Bank of Thailand

Stock Market Indexes [M]



Source: Stock Exchange of Thailand and Reuters, calculated by Bank of Thailand

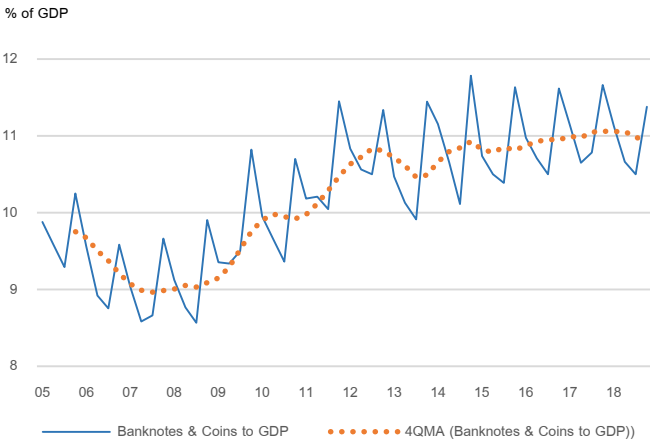
P/E Ratio [M]



Source: Stock Exchange of Thailand

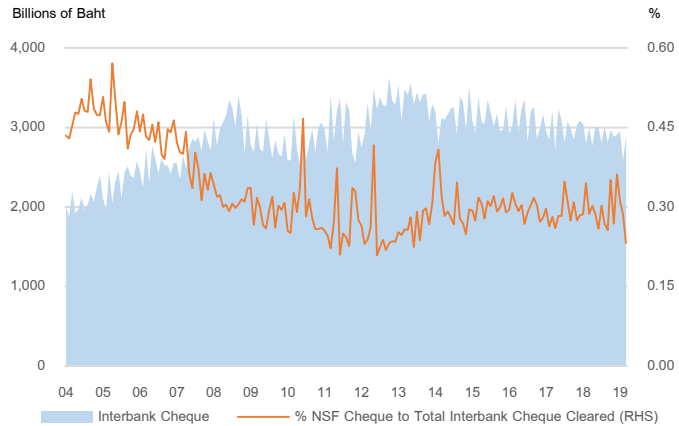
PAYMENT STATISTICS

Banknotes and Coins in Circulation to GDP [Q]



Source: Bank of Thailand [🔗](#)

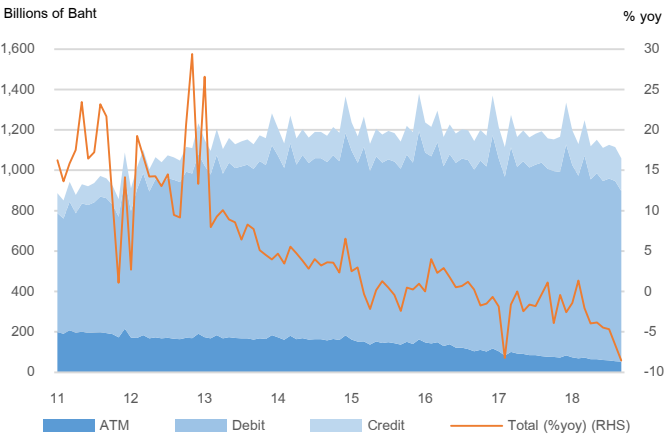
Value of Interbank Cheque Usage [M]



Source: Bank of Thailand [🔗](#)

Remark: NSF = Non Sufficient Funds

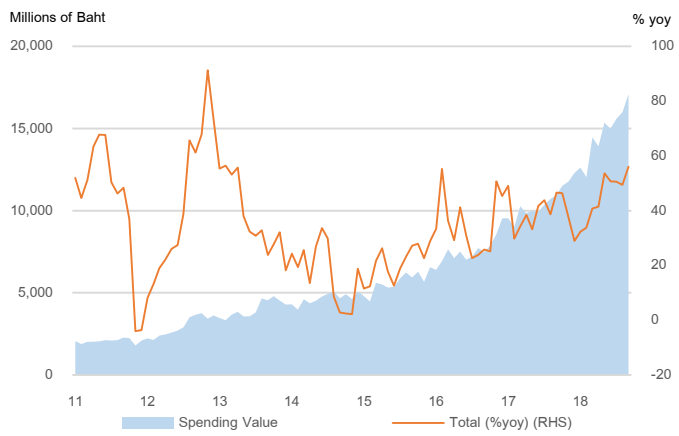
Value of Plastic Card Usage [M]



Source: Bank of Thailand [🔗](#)

Remark: The value of payment card transactions which the providers are commercial banks registered in Thailand, foreign bank branches and non-banks.

Value of e-Money Usage [M]



Source: Bank of Thailand [🔗](#)

Remark: Data including e-Money that is used in place of cash to pay for goods and services and excluding pre-paid cards for mobile phones.